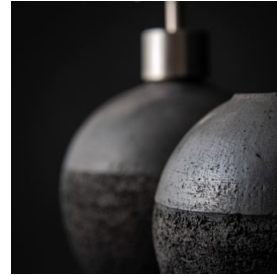
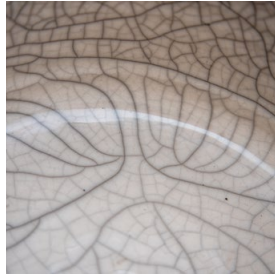


ceramics by
ILDIKÓ KÁROLYI



The objects born in my hands are reflections, imprints of the inner paths of my *explorer-researcher-observer* mind seeking harmony.





LADIKÓ KÁROLYI

I make ceramic objects. My creative process consists of constant, focused, yet in some aspects instinctive experimentation with materials, shapes and surfaces. My goal is to capture beauty. This process is an intuitive search for harmony, a quest for delight.

I'm a ceramist who's inspired by the material: clay itself, and the endless possibilities it offers. I'm drawn by the organic and inorganic beauties of nature, the forces shaping our environment. I also find inspiration by enjoying the moments given.

What does wabi-sabi mean in the western cultural context today? In my works I see it as the fundamental harmony between the irregularity of the raw, natural surfaces and the geometric ornamentation or the timeless proportions of the pure spherical form. A unity creating powerful, often perplexing beauty in my pieces.



Whispering Globes

Whispering Globes are an original idea of mine. They are messengers destined to deliver your wishes to your loved ones. Every piece is a distinct, tangible universe, a complete, unique gift. Through them I mean to recall the first use of clay by humans. These pieces virtually ask to be picked up by two hands, they are ergonomic in their roundness, and also celebrate the uniquely variable tactile decorative capabilities of our medium. They work like this ↪





1. Think of someone you love.
2. Fill the globe by whispering your best wishes.
3. Gift it to a friend or a loved one.
4. The Whispering Globe will reveal your good wishes to the right person if they listen carefully.



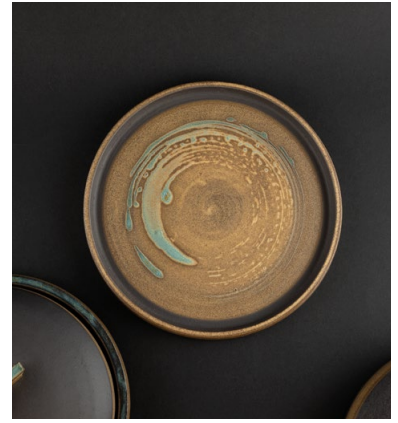
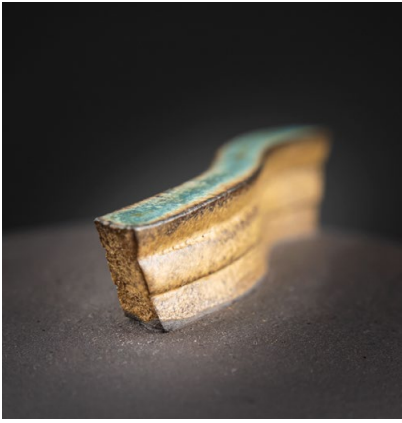




Teacups • Mate Gourds

We are not all the same. We have different tastes, needs, personalities, expectations, so why would we want the same things? My ceramic objects, even my teacups are different, every single one is a miniature piece of art, they have their own character.





Stoneware Tableware Sets

I recommend my functional raku pieces for personal tea or mate ceremonies due to their cultural bond and spiritual dimension. But for more demanding environments like *pâtisseries* or restaurants, where durability and a different level of hygiene are a must, we need to consider stoneware or porcelain. Yet, my aim is to evoke the “same” uniquely unpredictable surfaces known from my raku vessels. By using custom made materials, it’s possible to recall some of that spirituality in my high-fired pieces, too.





Art Pieces • Vases • Bonsai Pots • Planters • Bathroom Accessories

One of the beauties of *wabi-sabi* is how it embraces change, how it appreciates the process of aging. That idea can be definitely applied to objects, too. Sometimes I hear comments on the *raku* technique that it is imperfect as surfaces keep evolving and changing after firing.

But I see that as an intriguing process, a fascinating journey.



